

  
**TALZENNA**<sup>®</sup> +  
talazoparib 0.5 mg capsules

  
**Xtandi**<sup>®</sup>  
(enzalutamide)  
40 mg tablets | 80 mg tablets

# EXPLORE TALZENNA + XTANDI

## USE

TALZENNA is a prescription medicine used in combination with a medicine called enzalutamide, to treat adults with prostate cancer

- + with certain abnormal inherited or acquired genes called homologous recombination repair (HRR genes) **and**
- + which no longer responds to a hormone therapy or surgical treatment to lower testosterone and has spread to other parts of the body (metastatic).

Your healthcare provider will perform a test to make sure that TALZENNA is right for you.

It is not known if TALZENNA is safe and effective in children.

## IMPORTANT SAFETY INFORMATION

**TALZENNA may cause serious side effects, including:**

**Bone marrow problems called Myelodysplastic Syndrome (MDS) or Acute Myeloid Leukemia (AML).**

Some people who have cancer and who have received previous treatment with chemotherapy or certain other medicines for their cancer have developed MDS or AML during or after treatment with TALZENNA. MDS or AML may lead to death. If you develop MDS or AML, your healthcare provider will stop treatment with TALZENNA.

Symptoms of low blood cell counts are common during treatment with TALZENNA but can be a sign of serious problems, including MDS or AML. Tell your healthcare provider if you have any of the following symptoms during treatment with TALZENNA:

- + weakness
- + weight loss
- + fever
- + frequent infections
- + blood in urine or stool
- + shortness of breath
- + feeling very tired
- + bruising or bleeding more easily

Please see additional Important Safety Information throughout. Click for the full TALZENNA [Patient Information](#) or visit [TALZENNAXTANDI.com](http://TALZENNAXTANDI.com). Please talk to your doctor or see XTANDI Patient Information for Important Safety Information about XTANDI.



**STARTING  
 TALZENNA + XTANDI**



+ TALZENNA is a prescription medicine used in combination with XTANDI to treat adults with **metastatic castration-resistant prostate cancer with homologous recombination repair gene mutations (HRR gene-mutated mCRPC)**. HRR gene-mutated mCRPC is prostate cancer with certain abnormal inherited or acquired genes called homologous recombination repair (HRR genes) which no longer responds to a hormone therapy or surgical treatment to lower testosterone (castration-resistant) and has spread to other parts of the body (metastatic).

+ TALZENNA is not chemotherapy or an infusion. It's an oral treatment with:



**ONCE-DAILY  
 DOSING**



**TAKEN WITH OR  
 WITHOUT FOOD**

**FIND OUT IF YOU'RE ELIGIBLE FOR TALZENNA + XTANDI BASED ON YOUR HRR STATUS**

**WHAT ARE HRR GENE MUTATIONS?**

HRR genes are involved in repairing damaged DNA. If you have mutations in HRR genes, the DNA repair proteins can't work properly. This may increase the likelihood of developing certain types of cancers, including prostate cancer.

*Based on a review of multiple studies and/or collected data reporting the occurrence of HRR gene mutations in mCRPC.*

About **1 in 4** men (~25%) with mCRPC have an HRR gene mutation.\*

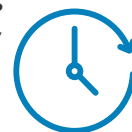


**THERE ARE 2 TYPES OF HRR GENE MUTATIONS, INCLUDING:**

*HRR gene mutations that are inherited, meaning they are passed down from parent to child; or,*



*HRR gene mutations that occur randomly and can occur throughout your lifetime.*



\*HRR rates can vary depending on the study, as studies have patient populations with different baseline characteristics, sequencing methods, and mutational definitions.

**WHY DOES HRR STATUS MATTER?**

Knowing your HRR status can help:

- + Inform your treatment options.
- + Your doctor determine the general approach for managing your prostate cancer.

Since these mutations can be inherited, knowing your HRR status may help determine if your family is at an increased risk of developing certain types of cancer.

**HOW ARE HRR GENE MUTATIONS IDENTIFIED?**

Your doctor can perform a genetic test to determine if you have HRR gene mutations. Genetic testing can be done using a tissue or blood sample.

**ASK YOUR DOCTOR ABOUT YOUR HRR MUTATION STATUS.**

They may have already tested for HRR mutations and can review the results with you. If this testing hasn't been done yet, your doctor can help coordinate the appropriate genetic test.

HRR = Homologous recombination repair.

**IMPORTANT SAFETY INFORMATION (CONT'D)**

**TALZENNA may cause serious side effects, including: Bone marrow problems called Myelodysplastic Syndrome (MDS) or Acute Myeloid Leukemia (AML). (Continued)**



Your healthcare provider will do blood tests to check your blood cell counts:

- + every month during treatment with TALZENNA
- + weekly if you have low blood cell counts that last a long time. Your healthcare provider may stop treatment with TALZENNA until your blood cell counts improve.



## HOW THIS TREATMENT MAY HELP

### TALZENNA + XTANDI IN A CLINICAL TRIAL

<p>TALZENNA + XTANDI was studied in adults with <b>HRR gene-mutated mCRPC</b>. The main goal was to see how long people with this type of prostate cancer lived without their cancer growing or spreading or if the patient died for any reason. 200 patients were given TALZENNA + XTANDI. 199 patients were given a placebo + XTANDI.</p>	OF THOSE PEOPLE WHO TOOK PART IN THE TRIAL:	
	<p><b>200</b>   <i>patients were given TALZENNA + XTANDI</i></p>	<p><b>199</b>   <i>patients were given a placebo + XTANDI</i></p>

**All men either had surgery to lower testosterone or continued to take hormone therapy in the study.**

HRR gene-mutated mCRPC = prostate cancer with certain abnormal inherited or acquired genes called homologous recombination repair (HRR genes) that has spread to other parts of the body (metastatic) and no longer responds to a hormone therapy or surgical treatment to lower testosterone (castration-resistant).

### IMPORTANT SAFETY INFORMATION (CONT'D)

**Before taking TALZENNA, tell your healthcare provider about all of your medical conditions, including if you:**

- + have kidney problems
- + are pregnant or plan to become pregnant. TALZENNA can harm your unborn baby and may cause loss of pregnancy (miscarriage). You should not become pregnant during treatment with TALZENNA. Tell your healthcare provider right away if you are pregnant or become pregnant during treatment with TALZENNA.
  - > Males with female partners who are pregnant or are able to become pregnant should use effective birth control during treatment with TALZENNA and for at least 4 months after receiving the last dose of TALZENNA.
- + are breastfeeding or plan to breastfeed. It is not known if TALZENNA passes into your breast milk.

**Tell your healthcare provider about all the medicines you take**, including prescription medicines, over-the-counter medicines, vitamins, and herbal supplements. Taking TALZENNA and certain other medicines can affect how TALZENNA works and may cause side effects.

Know the medicines you take. Keep a list of your medicines and show it to your healthcare provider and pharmacist when you get a new medicine.

## A PROVEN COMBINATION THERAPY

### EFFECT ON CANCER PROGRESSION

In a clinical trial, the risk of cancer progression was **reduced by 55% with TALZENNA + XTANDI** compared to those taking a placebo + XTANDI. Cancer progression was seen in 66 of the 200 (33.0%) men taking TALZENNA + XTANDI vs. 104 of the 199 (52.3%) men taking a placebo + XTANDI.

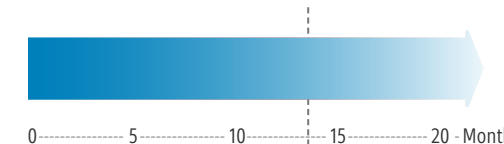
Progression was defined as the cancer getting worse, as measured by scans, or if the patient died for any reason.




### MEDIAN TIME UNTIL CANCER PROGRESSION\*

\*The median is not the average but the middle of a set of numbers. The median time until cancer progression is how long it takes until half of the people in the study's cancer starts growing or spreading again or if they die for any reason.

#### TALZENNA + XTANDI



**The median length of time until the cancer grew or spread was not reached**  for TALZENNA + XTANDI. In this clinical trial, patients taking TALZENNA + XTANDI had a 97.5% chance that the median time until cancer progression was at least 21.9 months.

#### PLACEBO + XTANDI



The median length of time until the cancer grew or spread was 13.8 months for a placebo + XTANDI.

**All men either had surgery to lower testosterone or continued to take hormone therapy in the study.**

#### What does median not reached for TALZENNA + XTANDI mean?

"Median not reached" means that more than half of patients were alive without their cancer progressing at the time of analysis.





## IMPORTANT SAFETY INFORMATION

**TALZENNA may cause serious side effects, including: Bone marrow problems called Myelodysplastic Syndrome (MDS) or Acute Myeloid Leukemia (AML).**

Some people who have cancer and who have received previous treatment with chemotherapy or certain other medicines for their cancer have developed MDS or AML during or after treatment with TALZENNA. MDS or AML may lead to death. If you develop MDS or AML, your healthcare provider will stop treatment with TALZENNA.

Symptoms of low blood cell counts are common during treatment with TALZENNA but can be a sign of serious problems, including MDS or AML. Tell your healthcare provider if you have any of the following symptoms during treatment with TALZENNA:

- + weakness
- + weight loss
- + fever
- + frequent infections
- + blood in urine or stool
- + shortness of breath
- + feeling very tired
- + bruising or bleeding more easily

Your healthcare provider will do blood tests to check your blood cell counts:

- + every month during treatment with TALZENNA
- + weekly if you have low blood cell counts that last a long time. Your healthcare provider may stop treatment with TALZENNA until your blood cell counts improve.

**Before taking TALZENNA, tell your healthcare provider about all of your medical conditions, including if you:**

- + have kidney problems
- + are pregnant or plan to become pregnant. TALZENNA can harm your unborn baby and may cause loss of pregnancy (miscarriage). You should not become pregnant during treatment with TALZENNA. Tell your healthcare provider right away if you are pregnant or become pregnant during treatment with TALZENNA.
  - > Males with female partners who are pregnant or are able to become pregnant should use effective birth control during treatment with TALZENNA and for at least 4 months after receiving the last dose of TALZENNA.
- + are breastfeeding or plan to breastfeed. It is not known if TALZENNA passes into your breast milk.

**Tell your healthcare provider about all the medicines you take,**

including prescription medicines, over-the-counter medicines, vitamins, and herbal supplements. Taking TALZENNA and certain other medicines can affect how TALZENNA works and may cause side effects.

Know the medicines you take. Keep a list of your medicines and show it to your healthcare provider and pharmacist when you get a new medicine.

### How to take TALZENNA

- + Take TALZENNA exactly as your healthcare provider tells you.
- + Do not change your dose or stop taking TALZENNA without first talking with your healthcare provider.
- + You should start or continue a gonadotropin-releasing hormone (GnRH) analog therapy during your treatment with TALZENNA and enzalutamide unless you have had a surgery to lower the amount of testosterone in your body (surgical castration).

TALZENNA may cause fertility problems in males. This may affect your ability to father a child. Talk to your healthcare provider if this is a concern for you.

These are not all of the possible side effects of TALZENNA. Call your doctor for medical advice about side effects.

**You are encouraged to report side effects of prescription drugs to the FDA. Visit [www.fda.gov/medwatch](http://www.fda.gov/medwatch) or call 1-800-FDA-1088.**

- + If you miss a dose of TALZENNA or vomit, take your next dose at your regular time. Do not take an extra dose to make up for a missed dose.
- + If you take too much TALZENNA, call your healthcare provider or go to the nearest hospital emergency room right away.

**The most common side effects of TALZENNA when taken in combination with enzalutamide include:**

- |                               |                                    |
|-------------------------------|------------------------------------|
| + low red blood cell counts   | + low phosphate in the blood       |
| + low white blood cell counts | + bone injuries                    |
| + tiredness or weakness       | + low magnesium in the blood       |
| + low platelet counts         | + dizziness                        |
| + low calcium in the blood    | + increased bilirubin in the blood |
| + nausea                      | + low potassium in the blood       |
| + decreased appetite          | + changes in your sense of taste   |
| + low sodium in the blood     |                                    |



## LEARN MORE ABOUT CERTAIN SIDE EFFECTS

Before you start taking TALZENNA + XTANDI, it's important to know what to expect during treatment. Stay informed and work with your doctor to identify and manage any side effects that you may experience.

*Your doctor may help you manage side effects by modifying your dose or making other adjustments in your overall treatment plan.*

### MONITORING YOUR THERAPY AND SIDE EFFECTS

Your healthcare provider will do blood tests to check your blood cell counts:

- + every month during treatment with TALZENNA
- + weekly if you have low blood cell counts that last a long time. Your doctor may stop treatment with TALZENNA until your blood cell counts improve.

### COMMON SIDE EFFECTS

The most common side effects of TALZENNA when taken in combination with enzalutamide include:

- |                               |                                    |
|-------------------------------|------------------------------------|
| + Low red blood cell counts   | + Low phosphate in the blood       |
| + Low white blood cell counts | + Bone injuries                    |
| + Tiredness or weakness       | + Low magnesium in the blood       |
| + Low platelet counts         | + Dizziness                        |
| + Low calcium in the blood    | + Increased bilirubin in the blood |
| + Nausea                      | + Low potassium in the blood       |
| + Decreased appetite          | + Changes in your sense of taste   |
| + Low sodium in the blood     |                                    |

### TIPS TO HELP MANAGE CERTAIN SIDE EFFECTS

These tips come from organizations that focus on supporting patients; they have not been studied with TALZENNA. **Be sure to talk to your healthcare team to understand if these tips are right for you.**

#### LOW RED BLOOD CELL COUNTS

Treatment may cause a decrease in the number of red blood cells, known as anemia. Anemia may cause you to feel very tired, short of breath, and/or lightheaded.

- ✓ **TIP TO MANAGE:**  
Talk with your doctor as you may need to eat more foods that are high in protein or iron

#### LOW WHITE BLOOD CELL COUNTS

During treatment, you may experience a decrease in white blood cell numbers, which could put you at an increased risk of infection.

- ✓ **TIP TO MANAGE:**  
Wash your hands often and minimize your exposure to people who might be sick

#### TIREDNESS OR WEAKNESS

While on treatment, you may experience fatigue. Anemia could also contribute to the feeling of tiredness or weakness.

- ✓ **TIP TO MANAGE:**  
Choose activities that are most important to you and do them when you have the most energy

#### LOW PLATELET COUNTS

Platelets are cells that help your blood clot and stop bleeding. Treatment may cause the number of blood-platelet cells to decrease, which could increase your risk of bruising and bleeding.

- ✓ **TIP TO MANAGE:**  
Be careful about over-the-counter medicines, such as aspirin, that can increase your risk of bleeding

#### LOW CALCIUM IN THE BLOOD

Treatment may cause low levels of calcium in the blood. This may cause you to have muscle cramps, especially in your back and legs.

- ✓ **TIP TO MANAGE:**  
Try to maintain adequate calcium intake with foods like cheese, yogurt, leafy greens, and nuts

#### NAUSEA

During treatment, you may experience nausea or an upset stomach.

- ✓ **TIP TO MANAGE:**  
Try to eat 5 or 6 small meals a day instead of 3 large ones and slowly sip liquids throughout the day

#### DECREASED APPETITE

Treatment may lower your appetite, which could lead to malnourishment. Nausea may also contribute to loss of appetite.

- ✓ **TIP TO MANAGE:**  
Eat several small meals a day that are high in calories and protein

#### LOW SODIUM IN THE BLOOD

Treatment may cause sodium levels in the blood to be lower than normal. This may cause nausea and vomiting, low energy, and/or headaches.

- ✓ **TIP TO MANAGE:**  
Limit your water intake and talk with your doctor about adding salt to your diet

These are not all of the possible side effects of TALZENNA + XTANDI. Call your doctor for medical advice about side effects.

You are encouraged to report side effects of prescription drugs to the FDA. Visit [www.fda.gov/medwatch](http://www.fda.gov/medwatch) or call 1-800-FDA-1088.

# MAKING YOUR SUPPORT NEEDS A PRIORITY. TOGETHER.

At Pfizer Oncology Together™, we treat your individual needs as a priority. We'll help you identify financial assistance options and connect you with a dedicated Care Champion who has social work experience and will offer resources that may help with some of your day-to-day challenges.\* Because when it comes to support, we're in this together.

\*Pfizer Oncology Together™ covers eligible patients prescribed TALZENNA. Pfizer Oncology Together™ does not cover an XTANDI prescription.

## CARE CHAMPION SUPPORT

At Pfizer Oncology Together™, our Care Champions, who have social work experience, can provide you resources that may help with some of your day-to-day challenges:†



### EMOTIONAL SUPPORT

We can connect you to diagnosis-specific support groups, an independent organization that offers short-term counseling, and a free app, developed by Pfizer Oncology, to help patients connect with loved ones and ask for the support they need.

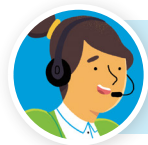
### EDUCATIONAL SUPPORT

To help support your overall health and well-being, we've created resources about physical and mental health, as well as nutrition tips and healthy recipes developed in partnership with dietitians who specialize in oncology nutrition. We can also provide you with information to help you understand your prescribed TALZENNA.

### PRACTICAL SUPPORT

If you need assistance with transportation or lodging for treatment-related appointments, we'll connect you to independent organizations that offer these services for free to qualifying patients. And if you're leaving work for a period of time during treatment, or preparing to return to work, we can send you information to help make the transition easier.

†Some services are provided through third-party organizations that operate independently and are not controlled by Pfizer. Availability of services and eligibility requirements are determined solely by these organizations.



**FOR LIVE, PERSONALIZED SUPPORT**

Call **1-877-744-5675** (Monday–Friday 8 AM–8 PM ET)

**VISIT**

**PfizerOncologyTogether.com**

Please see Important Safety Information throughout. Click for the full [TALZENNA Patient Information](#) or visit [TALZENNAXTANDI.com](#). Please talk to your doctor or see XTANDI Patient Information for Important Safety Information about XTANDI.

## FINANCIAL ASSISTANCE RESOURCES

### COMMERCIALLY INSURED

Resources for eligible commercial, private, employer, and state health insurance marketplace patients:



**CO-PAY ASSISTANCE:** Eligible, commercially insured patients may pay as little as **\$0 per month for TALZENNA.\*** There are no income requirements, forms, or faxing to enroll.

\*Limits, terms, and conditions apply. Patients are not eligible to use this card if they are enrolled in a state or federally funded insurance program, including but not limited to Medicare, Medicaid, TRICARE, Veterans Affairs health care, a state prescription drug assistance program, or the Government Health Insurance Plan available in Puerto Rico. Patients may receive up to \$25,000 per product in savings annually. **The offer will be accepted only at participating pharmacies. This offer is not health insurance.** No membership fees apply. Pfizer reserves the right to rescind, revoke, or amend this offer without notice. For any questions, please call 1-877-744-5675, visit [PfizerOncologyTogether.com/terms](#) or write: Pfizer Oncology Together Co-Pay Savings Program, 2250 Perimeter Park Drive, Suite 300, Morrisville, NC 27560.

### MEDICAL/GOVERNMENT INSURED

Help identifying resources for eligible patients with Medicare/Medicare Part D, Medicaid, and other government insurance plans:

- + Assistance with searching for support from independent charitable foundations. These foundations exist independently of Pfizer and have their own eligibility criteria and application processes. Availability of support from the foundations is determined solely by the foundations.
- + Financial assistance through Extra Help, a Medicare Part D Low-Income Subsidy (LIS) program.
- + Free medicine.‡

‡If support from independent charitable foundations or Medicare Extra Help is not available, Pfizer Oncology Together™ will provide eligible patients with medication for free through the Pfizer Patient Assistance Program. The Pfizer Patient Assistance Program is a joint program of Pfizer Inc. and the Pfizer Patient Assistance Foundation™. The Pfizer Patient Assistance Foundation is a separate legal entity from Pfizer Inc. with distinct legal restrictions.

### UNINSURED

Help identifying resources for eligible patients without any form of healthcare coverage:

- + Help finding coverage.
- + Free medicine through the Pfizer Patient Assistance Program‡ or at a savings through the Pfizer Savings Program.§

‡The Pfizer Patient Assistance Program is a joint program of Pfizer Inc. and the Pfizer Patient Assistance Foundation™. The Pfizer Patient Assistance Foundation is a separate legal entity from Pfizer Inc. with distinct legal restrictions.

§The Pfizer Savings Program is not health insurance. For more information, call the toll-free number 1-877-744-5675. There are no membership fees to participate in this program. Estimated savings are 50% and depend on such factors as the particular drug purchased, amount purchased, and the pharmacy where purchased.

# FACING CANCER ISN'T EASY, BUT *LivingWith*<sup>™</sup> MAY HELP.

**LivingWith**<sup>™</sup> is a free app for people living with cancer and those who love them. Designed to help you connect with loved ones, ask for the support you need, remember important information from doctors' visits, and stay organized, all in one place.



VISIT [ThisIsLivingWithCancer.com](https://www.thisislivingwithcancer.com)  
TO LEARN MORE.  
Available in English and Spanish.

Download **LivingWith**<sup>™</sup> for free.



The **LivingWith**<sup>™</sup> app is available to anyone living with cancer and their loved ones and is not specific to TALZENNA<sup>®</sup> (talazoparib). App Store is a service mark of Apple Inc., registered in the U.S. and other countries. Google Play and the Google Play logo are trademarks of Google LLC.



TALZENNA<sup>®</sup> is a registered trademark of Pfizer Inc.  
XTANDI<sup>®</sup> is a registered trademark of Astellas Pharma Inc.  
© 2023 Pfizer Inc. All rights Reserved.  
PP-TXT-USA-0031 June 2023



Please see Important Safety Information throughout. Click for the full TALZENNA [Patient Information](#) or visit [TALZENNEXTANDI.com](https://www.talzennextandi.com). Please talk to your doctor or see XTANDI Patient Information for Important Safety Information about XTANDI.